

**ITEM 39. PARKING – TIMED PARKING – ROSEBERY AVENUE ROSEBERY**

**TRIM RECORD NO: 2017/306635**

**RECOMMENDATION**

It is recommended that the Committee endorse the reallocation of parking on the western side of Rosebery Avenue, Rosebery as follows:

- (A) Between the points 10 metres and 135.2 metres (21 car spaces) north of Crewe Place, as “2P 8am-8pm”;
- (B) Between the points 135.2 metres and 145.2 metres north of Crewe Place, as “No Stopping”;
- (C) Between the points 151 metres and 161 metres north of Crewe Place, as “No Stopping”;
- (D) Between the points 161 metres and 195.4 metres (6 car spaces) north of Crewe Place, as “2P 8am-8pm”; and
- (E) Between the points 218.5 metres and 255.6 metres (6 car spaces) north of Crewe Place, as “2P 8am-8pm”;

**VOTING MEMBERS FOR THIS ITEM**

<b><i>Voting Members</i></b>	<b><i>Support</i></b>	<b><i>Object</i></b>
City of Sydney		
Roads and Maritime Services		
NSW Police – Redfern LAC		
Representative for the Member for Heffron		

**DECISION**

**BACKGROUND**

The Development Consent for 25-55 Rothschild Avenue, Rosebery (D/2015/1901) requires the Applicant to submit a signage plan for kerb side parking and line marking arrangements for the site’s frontage along Rosebery Avenue, to be referred to the Local Pedestrian, Cycling and Traffic Calming Committee.

**COMMENTS**

The City has approved the redevelopment of 25-55 Rothschild Avenue, Rosebery.

The kerb space on the western side of Rosebery Avenue, between Crewe Place and Epsom Road, along the front of 25-55 Rothschild Avenue, is currently “2P 8am-5pm Mon-Fri” or unrestricted for parking with a “Bus Zone” and a short section of “No Parking” across an old driveway.

To ensure consistency with the City's Neighbourhood Parking Policy, it is proposed to update the parking restrictions to reflect the change in adjacent land use. As such, it is proposed to install "2P 8am-8pm" along the frontage of the redevelopment site. This change will replace the existing "2P 8am-5pm Mon-Fri" restriction and unrestricted kerbspace and will comply with the City's Neighbourhood Parking Policy which recommends a two-hour parking limit in urban renewal area as it better balances the aim of deterring commuter parking with the needs of households for visitors, carers and tradespeople.

### **CONSULTATION**

The Applicant must notify adjacent properties at least seven days prior to the implementation of the changes.

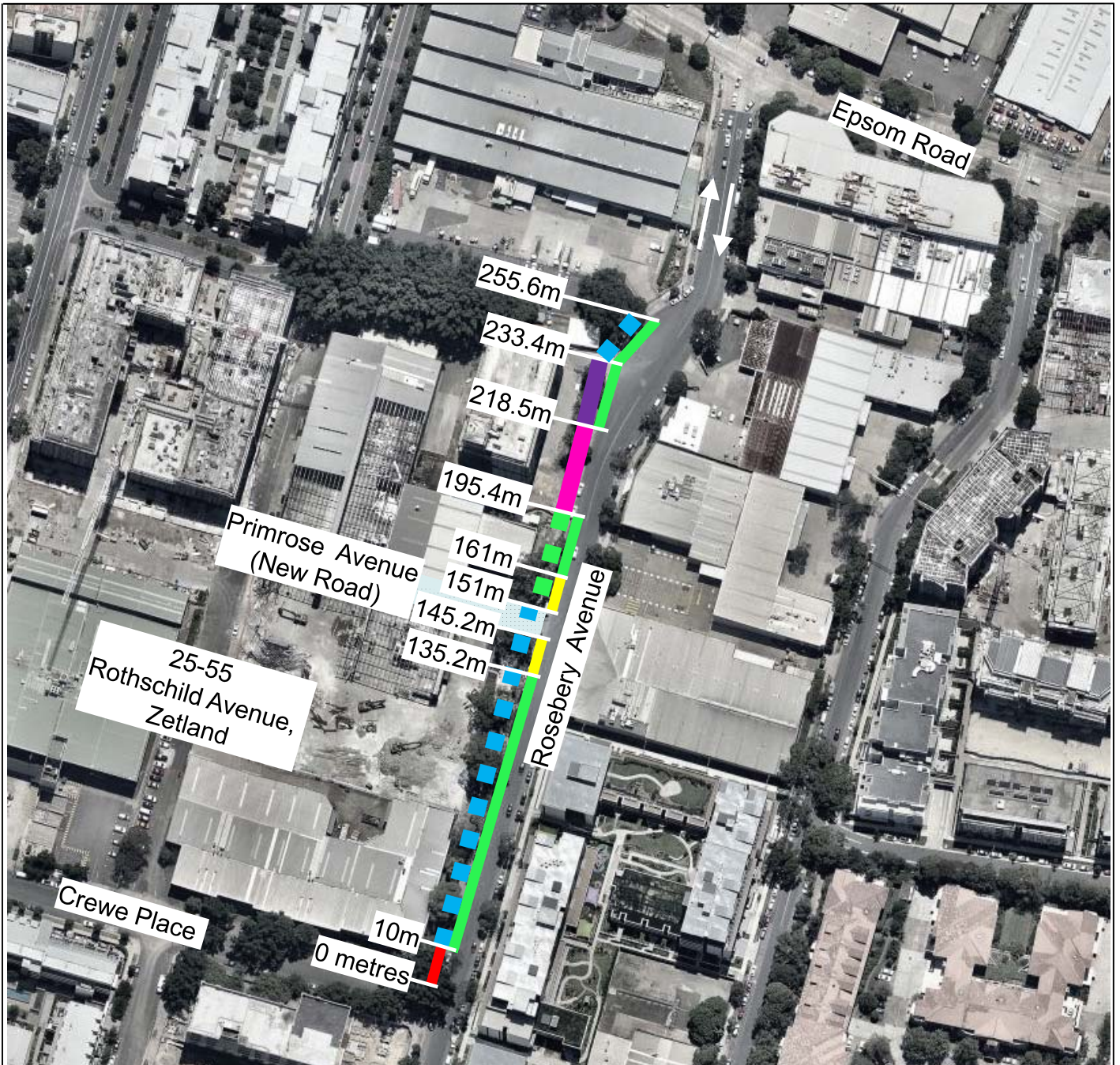
### **FINANCIAL**

All costs associated with the proposal will be borne by the Applicant.

### **ATTACHMENTS**

Parking – Timed Parking – Rosebery Avenue Rosebery

Eoin Cunningham, Senior Traffic Engineer



	No Stopping <b>(Existing)</b>		2P 8am-5pm Mon-Fri <b>(Existing)</b>		2P 8am-8pm <b>(Proposed)</b>
	Unrestricted <b>(Existing)</b>		No Parking <b>(Existing)</b>		No Stopping <b>(Proposed)</b>
	Bus Zone <b>(Existing)</b>				

Source: Nearmap -- Saturday 11 February 2017

	PROPOSAL	
	<b>PROPOSED TIMED PARKING</b> <b>WESTERN SIDE OF ROSEBERY AVENUE</b> <b>ROSEBERY</b>	

